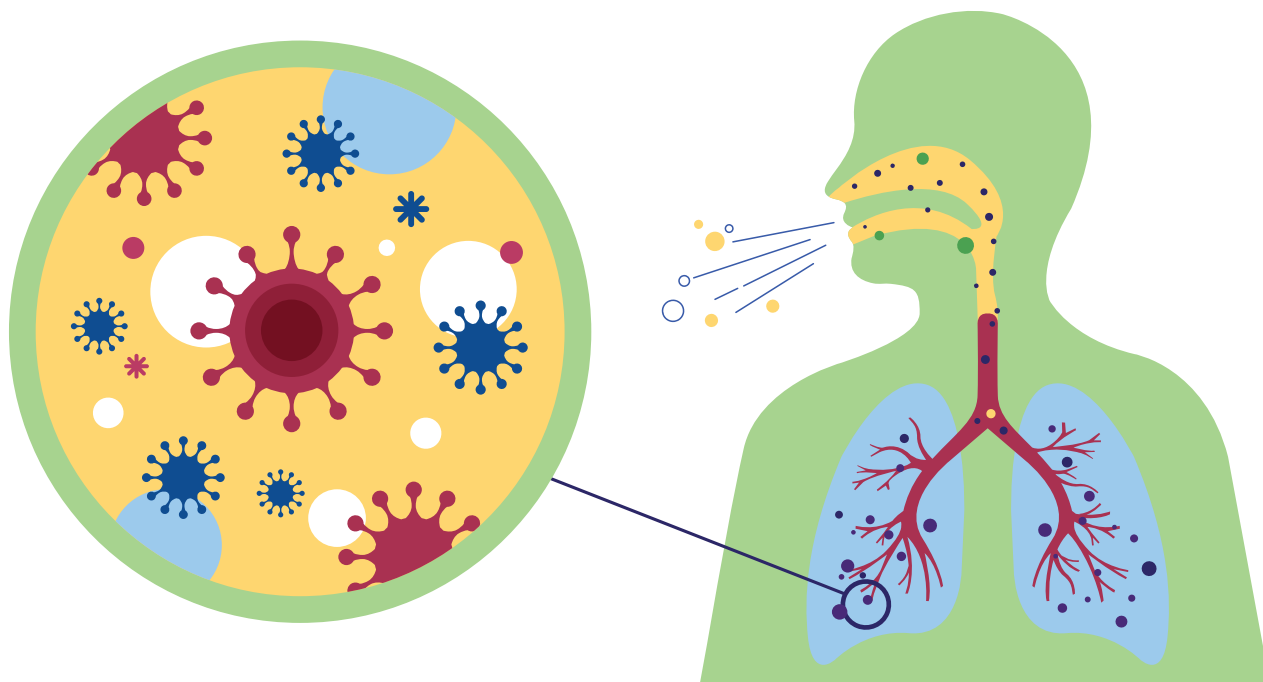
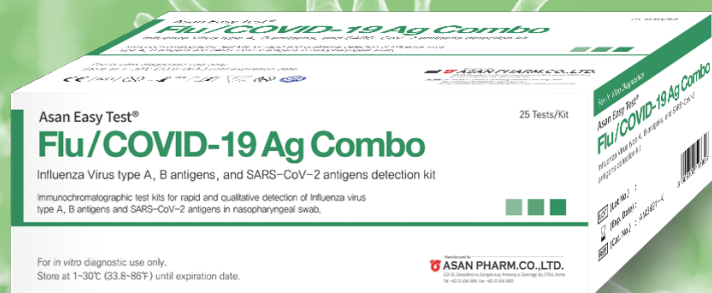


One step rapid test kit for Influenza A, B, and Novel Corona Virus antigen



Asan Easy Test Flu / COVID-19 Ag Combo

- A preliminary screening test for early, mild or asymptomatic patients
- Rapid test results in 15 ~ 20 minutes
- Easy and simple to use

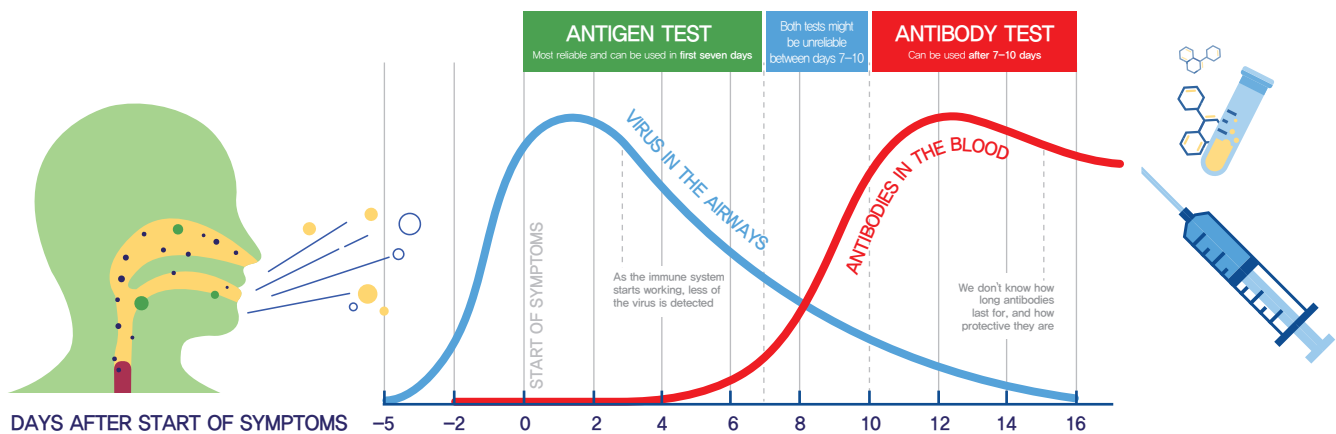


Order Information

Product code	Packaging
AM3493-K	20T / Kit
AM3491-K	25T / Kit



Recommended testing method over time



Clinical Performance Result

1) COVID-19 Ag

Asan Easy Test® Flu/COVID-19 Ag Combo	Real-Q Flu A, B Detection Kit for confirmatory test	
	Positive	Negative
Positive	142	5
Negative	8	345
Total	150	350

– Positive percent agreement: 94.7% (142/150) (95% CI: 88.8% ~ 97.7%)
– Negative percent agreement: 98.6% (345/350) (95% CI: 96.7% ~ 99.5%)

2) Influenza A

Asan Easy Test® Flu/COVID-19 Ag Combo	Real-Q Flu A, B Detection Kit for confirmatory test	
	Positive	Negative
Positive	49	0
Negative	1	100
Total	50	100

– Positive percent agreement: 98.0% (49/50) (95% CI: 88.0% ~ 99.9%)
– Negative percent agreement: 100.0% (100/100) (95% CI: 95.4% ~ 100.0%)

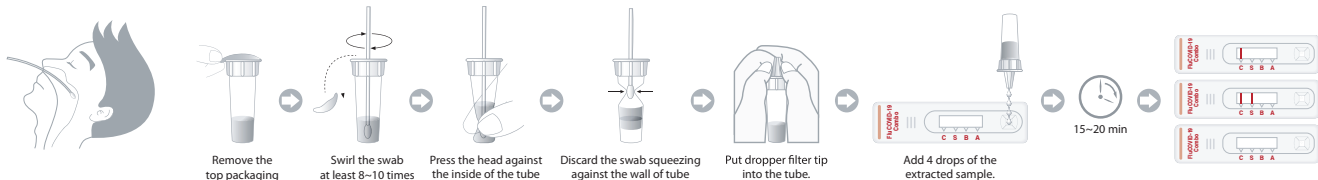
3) Influenza B

Asan Easy Test® Flu/COVID-19 Ag Combo	Real-Q Flu A, B Detection Kit for confirmatory test	
	Positive	Negative
Positive	27	0
Negative	3	120
Total	30	120

– Positive percent agreement: 90.0% (27/30) (95% CI: 72.3% ~ 97.4%)
– Negative percent agreement: 100.0% (120/120) (95% CI: 96.1% ~ 100.0%)

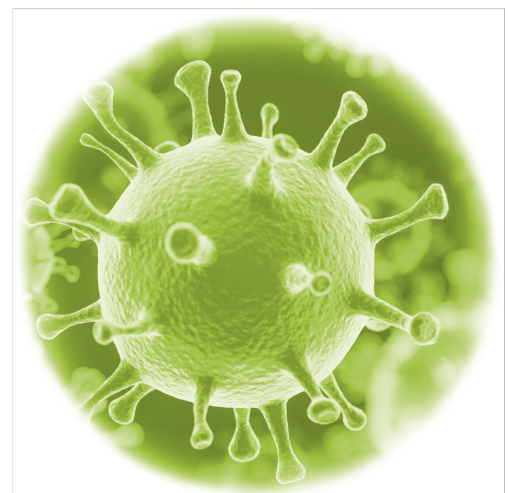
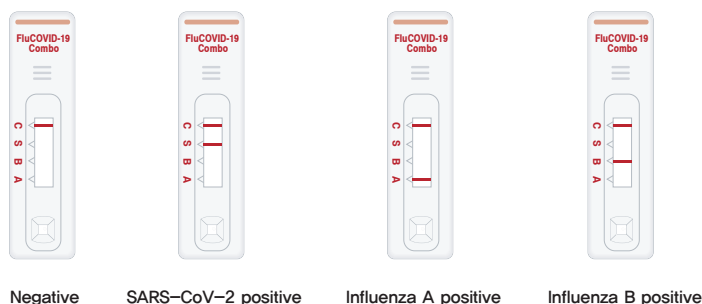
Test Procedure

A. Specimen collection B. Test Procedure



- All materials should be equilibrated to room temperature (15~25°C) before performing the test.
- When ready to test, remove the test device from the aluminum pouch and place it on a clean, dry. Label the test device with specimen's ID.
- Peel off the upper aluminum seal of the extraction tube. Hold the extraction tube vertically on the rack.
- Insert the patient swab specimen into the extraction tube. Swirl the swab at least 10 times while pressing the head against the bottom and side of test tube to release viral antigens from swab.
- Swirl the swab head against the inside of the test tube as you remove it. Dispose of the used swab in accordance with your biohazard waste.
- Press dropper filter tip tightly onto the extraction tube.
- Apply 4 (90~100µL) drops of extracted specimen to the sample dropping well of the test device.
- Read the result in 15~20 minutes after started reaction. The test result should not be read later than 30 minutes after started the reaction.

Interpretation of result



Asan Pharmaceutical Co., Ltd.
Address: 122-26, Gieopdanji-ro, Gongdo-eup, Anseong-si, Gyeonggi-do, 17551, Korea
Tel: +82-31-656-5990~2, Fax: +82-31-656-5992
E-mail: global@asanpharm.co.kr