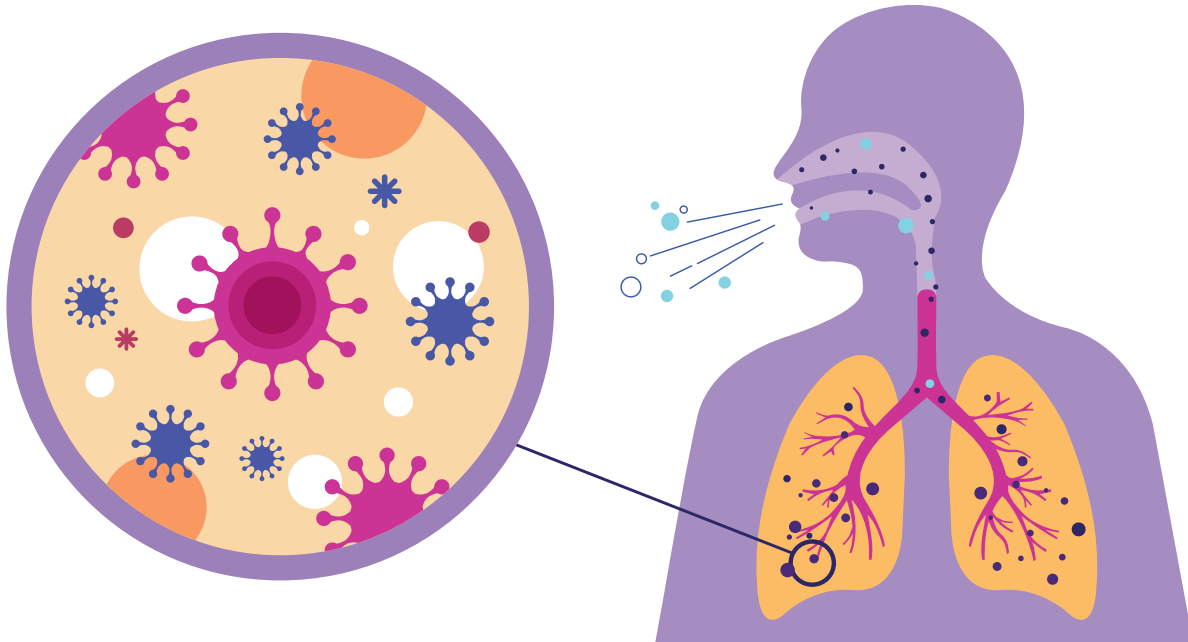


One step rapid detection Kit for Novel corona virus antibodies



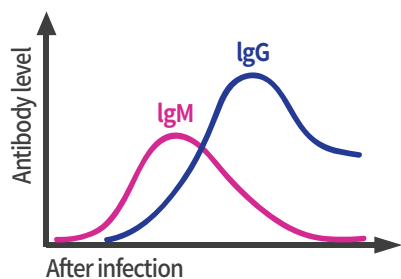
# Asan Easy Test COVID-19 IgG / IgM

- A preliminary screening test for early, mild or asymptomatic patients
- Rapid test result in 15minutes
- Easy to use and simple



13485:2016

## Kinetics of Seroconversion for IgM and IgG



COVID-19 virus specific **IgM** comes out first and can be detected during the early stage of infection onset of the disease.

COVID-19 virus specific **IgG** comes out later and can be detected during the middle stage of infection. If both analyzed, it can be detected more specific and stronger reaction.

## Clinical Performance Test

The Asan Easy Test COVID-19 IgG/IgM has been tested with 242 positive specimens and 300 negative specimens and the results are summarized in the following table.

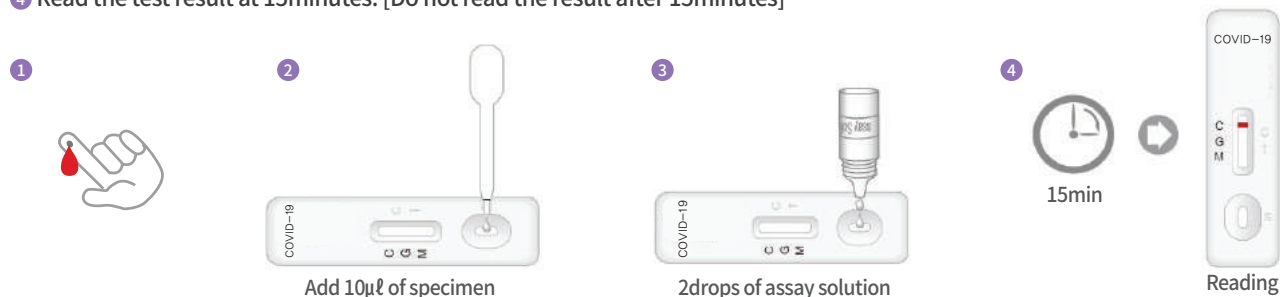
■ Positive coincidence rate: 95% (230/242)

Asan Easy Test® COVID-19 IgG/IgM	1~7 days after onset	8~14 days after onset	15~21 days after onset	1~21 days after onset
Positive	72	126	32	230
Negative	8	2	2	12
Positive coincidence rate	90.0% (72/80)	98.4% (126/128)	94.1% (32/34)	95.0% (230/242)

■ Negative coincidence rate: 95.7% (287/300)

## Test Procedure

- 1 Collect 10μℓ of serum, plasma or whole blood and follow the instruction manual
- 2 Add the specimen into the sample well of the device
- 3 Drop 2drops (70-100μℓ) of assay solution into the sample well of the device
- 4 Read the test result at 15minutes. [Do not read the result after 15minutes]



## Interpretation of the Test

