



## EXPLANATION OF THE TEST

Canine parvovirus (CPV) is the major viral disease in dogs in the world, which cause gastroenteritis resulting to severe enteritis and lymphopenia having high mortality in dogs. CPV antibody can give seroprotection against its infection in dogs. Therefore, CPV antibody titers are very important in the vaccination programs and health prediction in dogs.

### [Intend to use]

Asan Easy Test<sup>®</sup> CPV Ab is a chromatographic immunoassay kit for rapid and quantitative detection of canine parvovirus antibody (CPV Ab) from whole blood, serum or plasma specimen of dog.

### [Principle]

A nitrocellulose membrane is immobilized with anti-canine IgG monoclonal antibody and anti-NUS antibody in the test line and control line respectively. CPV Ab for test line and NUS for control line are conjugated to colloidal gold particles. This conjugate is placed on a polyester pad as a conjugate pad. This test is aimed to the detection of CPV antibody either in whole blood, serum or plasma. When the device is loaded with assay solution containing specimens, the anti-CPV antibodies of the sample firstly react with the CPV antigens of the antigen pad, and secondly react with the anti-CPV gold conjugate of the conjugate pad. Then, the complex comes into contact with the anti-canine IgG that it adsorbed onto the nitrocellulose. The result is visible within 10 minutes in the form of a purple line on the test line (T) region of the device. The solution continues to migrate to encounter anti-NUS, thereby producing a second purple line on the control line (C) area.

## MATERIALS PROVIDED

Asan Easy Test<sup>®</sup> CPV Ab contains following components:

1. Test devices individually foil-pouched with a desiccant : 10ea
2. Assay solution in tube : 10ea
3. EDTA Tube : 10ea
4. Disposable dropper : 10ea
5. Capillary tube : 10ea
6. Instruction manual for use : 1sheet
7. EasyTest Color Index : 1ea

## PRECAUTIONS

1. The presence of humidity may decrease the stability of the reagents. Thus, please carry out the test immediately after removing the device from the foil pouch.
2. Do not use the kit after the expiration date and do not freeze the kit.
3. For veterinary use only.
4. Wear protective gloves while handling samples and wash hands thoroughly after the test.
5. Dispose all the specimens and kits properly after test, in accordance with GLP.
6. Never use reagent from another kits and do not reuse the test kit.
7. Discard the assay solution if it is contaminated with bacteria or mold.

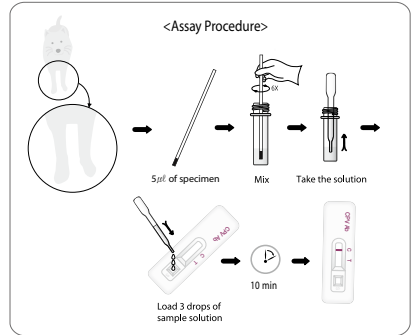
## SPECIMEN COLLECTION AND STORAGE

1. Whole blood, serum or plasma from dogs may be used in this kit.
2. All specimens should be handled as being potentially infectious.
3. When using a **whole blood** specimen, it is recommended that you use EDTA tube and test immediately after blood collection. If not test immediately, they should be refrigerated at 2~8°C for up to three day, but doesn't completely rule out the risk of hemolysis.
4. If **serum/plasma** can not be tested immediately, they should be refrigerated at 2~8°C. For longer storage than one week, freeze them at -20°C or below.
5. Serum specimen can make the better results.
6. Contaminated or precipitation in blood specimen may yield incorrect or inconsistent results.
7. Hemolytic, lipaemic, icteric specimens should be avoided. They can occur erroneous results.

## TEST PROCEDURE

1. Place all specimens, test devices, and allow them to room temperature prior to testing (15~30 min).

2. Remove the test device from the sealed pouch and assay solution in the tube, and place it on a clean and plain place.
3. Using the capillary tube provided in the kit, add 5  $\mu$ l of specimen into a tube containing an assay solution.
4. Gently stir the mixture solution with the capillary tube to make sure the suitable mixing of specimen with assay solution, and then remove the capillary tube.
5. Using the disposable dropper provided in the kit, take the mixture solution from the tube. And then, add 3 drops of the mixture solution into the test device.
6. Interpret the test results at 10 minutes. Do not interpret after 15 minutes.



## INTERPRETATION OF THE TEST

### [Using EasyTest Color Index]

1. Compare the band color from test line with EasyTest Color Index.
2. Read the score of antibody titer.
3. Interpret the result with the below Interpretation Table.

Interpretation Table For EasyTest Color Index

Color Score	EasyTest Color Index	Interpretation Score	Titer of *HI
0	No band or trace	Very poor CPV immune status	
1-1		" "	
1-2		Poor CPV immune status	<1:40
2-1		" "	
2-2		Good CPV immune status	<1:80
3-1		" "	
3-2		Very good CPV immune status	<1:320
4-1		" "	
4-2		" "	

\*HI, haemagglutination inhibition.

## STORAGE & EXPIRATION

1. Asan Easy Test<sup>®</sup> CPV Ab should be stored between 1 to 30°C (33.8~86°F).
2. Expiration date of this kit is 24 months after its manufacture date.

## LIMITATIONS OF THE TEST

Asan Easy Test<sup>®</sup> CPV Ab is designed for primary screening test of antibodies against canine parvovirus in the canine whole blood, serum or plasma. This kit can provide fast and easy way to get a result, but do not completely exclude the possibility of false positive or false negative result caused by various factors. So, refer to the result of this kit, please make a final decision with clinical manifestation, other test results, and veterinarian's view, collectively.